

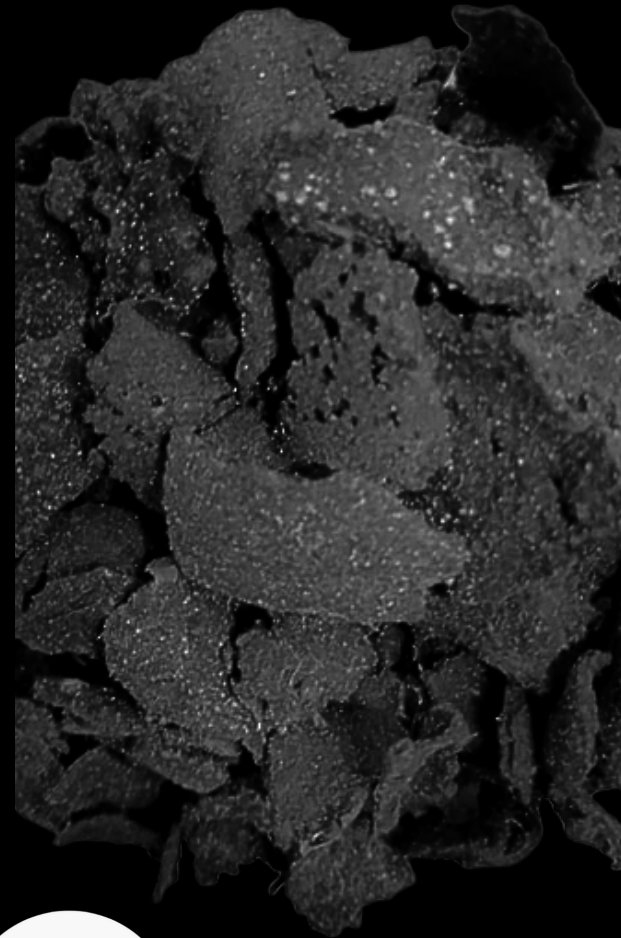
REACTOR AND EQUIPMENTS



SAMPLE PICTURES

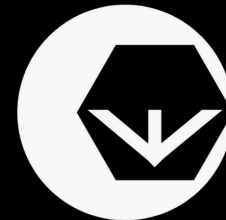


# WASTE INTO RESOURCE



WETCOAL

EMAIL : [INFO.WETCOAL@GMAIL.COM](mailto:INFO.WETCOAL@GMAIL.COM)  
PHONE : +91 7802869411, +91 9722818515



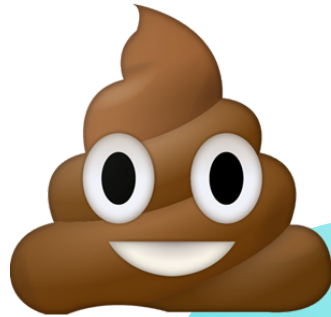
WETCOAL  
WASTE INTO RESOURCE

## WETCOAL

We specialize in efficient and eco-friendly waste treatment, producing biofuels and green energy. Our mission is to contribute to a cleaner and more prosperous energy future, benefiting both the environment and the economy.

## WHAT WE SOLVED?

Reducing greenhouse gas emissions by converting biomass into a carbon-rich fuel. Reducing the amount of waste sent to landfills by converting it into a valuable resource. Treating wastewater by removing pollutants and pathogens. Producing biofertilizers that can improve soil health. Creating new materials with a variety of applications, such as supercapacitors and adsorbents.



## OPPORTUNITY

We are targeting sustainable biofuel production, wastewater treatment, carbon sequestration, and resource recovery from organic waste.

## PRODUCTS



PHENOLIC TAR

BIO-CHARCOAL



SYN-GAS



## WHAT WASTE WE USE?

**Agricultural waste:** Crop residues, such as straw and husks, as well as manure and wastewater from livestock.

**Municipal waste:** Food waste, yard waste, and sewage sludge.

**Industrial waste:** Biomass waste from industries such as paper, pulp, and food processing.

**Hazardous waste:** Some types of hazardous waste, such as wood waste contaminated with pesticides.

## SERVICES

Sustainable Biomass Solutions,  
Value-Added Product Development,  
Subscription-Based Solutions, Integrated  
Supply Chain Management,  
Eco-Credentials Services.